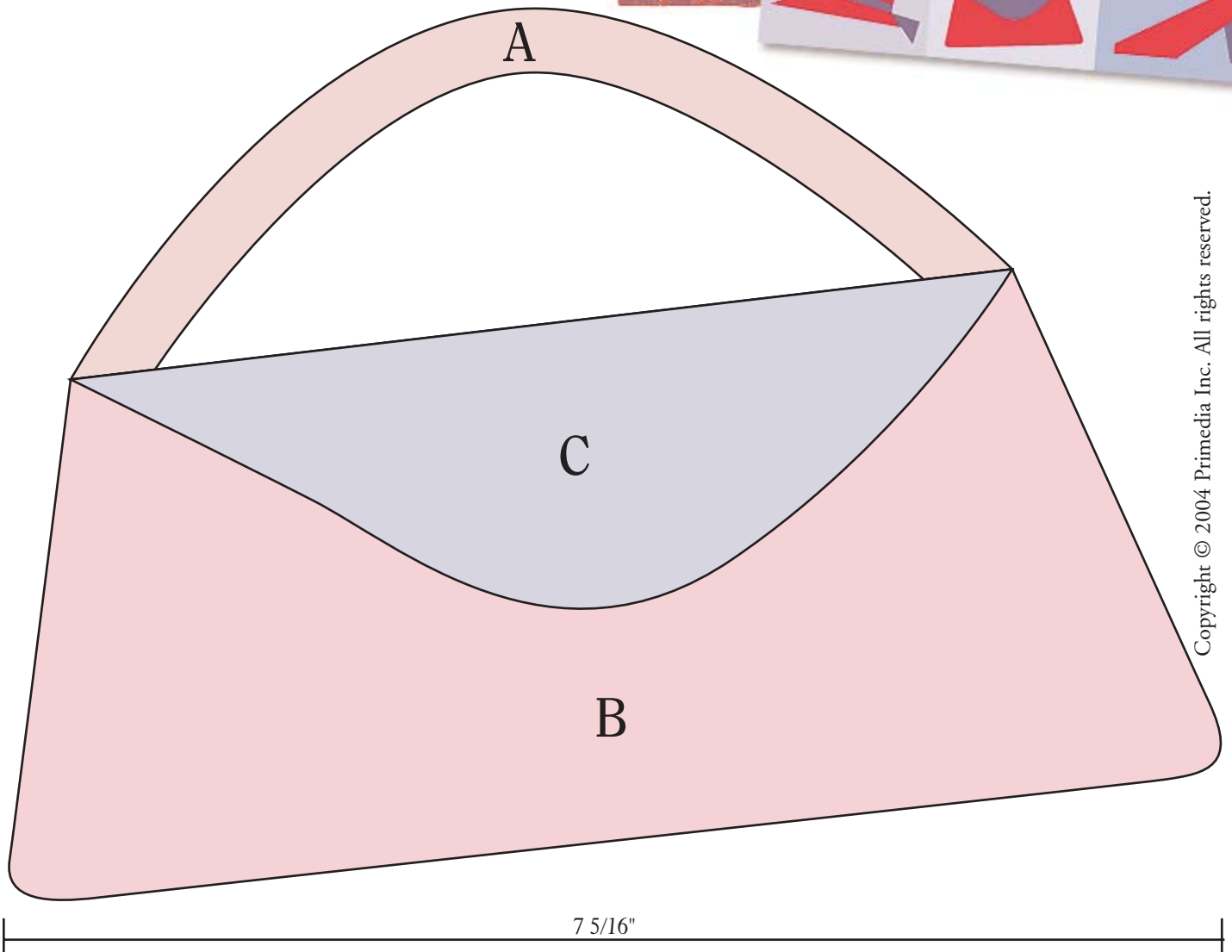


# Red Hats

A Web Extra from  
QUILTMAKER magazine  
<http://www.quiltmaker.com>

The July/August 2004 (#98) issue of *Quiltmaker* magazine featured a milestone-marking quilt pattern called *Red Hats*. Complete your quilted ensemble with a coordinating handbag and set of shoes! Use your favorite form of applique to complete the handbag block, and see the July/August issue or Basic Lessons for foundation-piecing information to complete the shoe block.

If you missed the July/August 2004 issue, or are not yet a subscriber to *Quiltmaker*, back issues may still be available at [www.VillageQuiltShoppe.com](http://www.VillageQuiltShoppe.com).



Copyright © 2004 Primedia Inc. All rights reserved.

# Red Hats

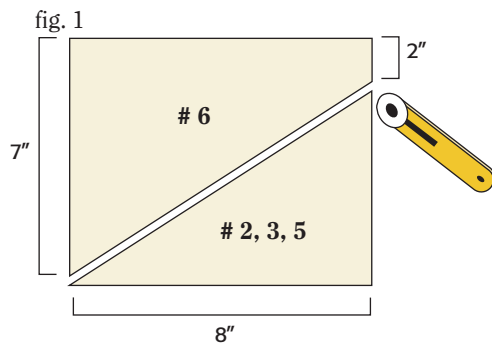
Helpful Hints

A Web Extra from  
*QUILTMAKER* magazine  
<http://www.quiltmaker.com>

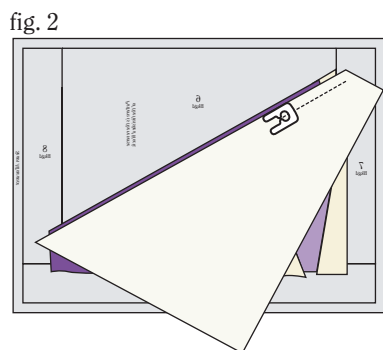
Use these helpful hints when constructing the *Steppin' Out* shoe foundation-pieced block.

## Cutting

When you sew and then flip the fabric for patch 6, its placement may surprise you. To avoid this surprise: From the background fabric, cut a piece 7" x 8". Then with the fabric right side up, cut this patch as shown (fig. 1).

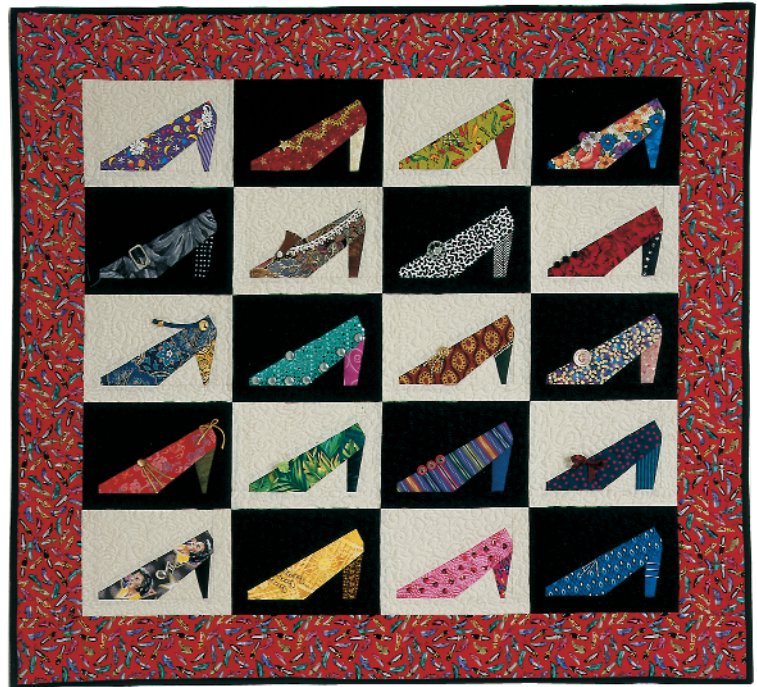


Use the large piece for patch 6 (fig. 2) and the smaller one for patches 2, 3 and 5.



## Sewing

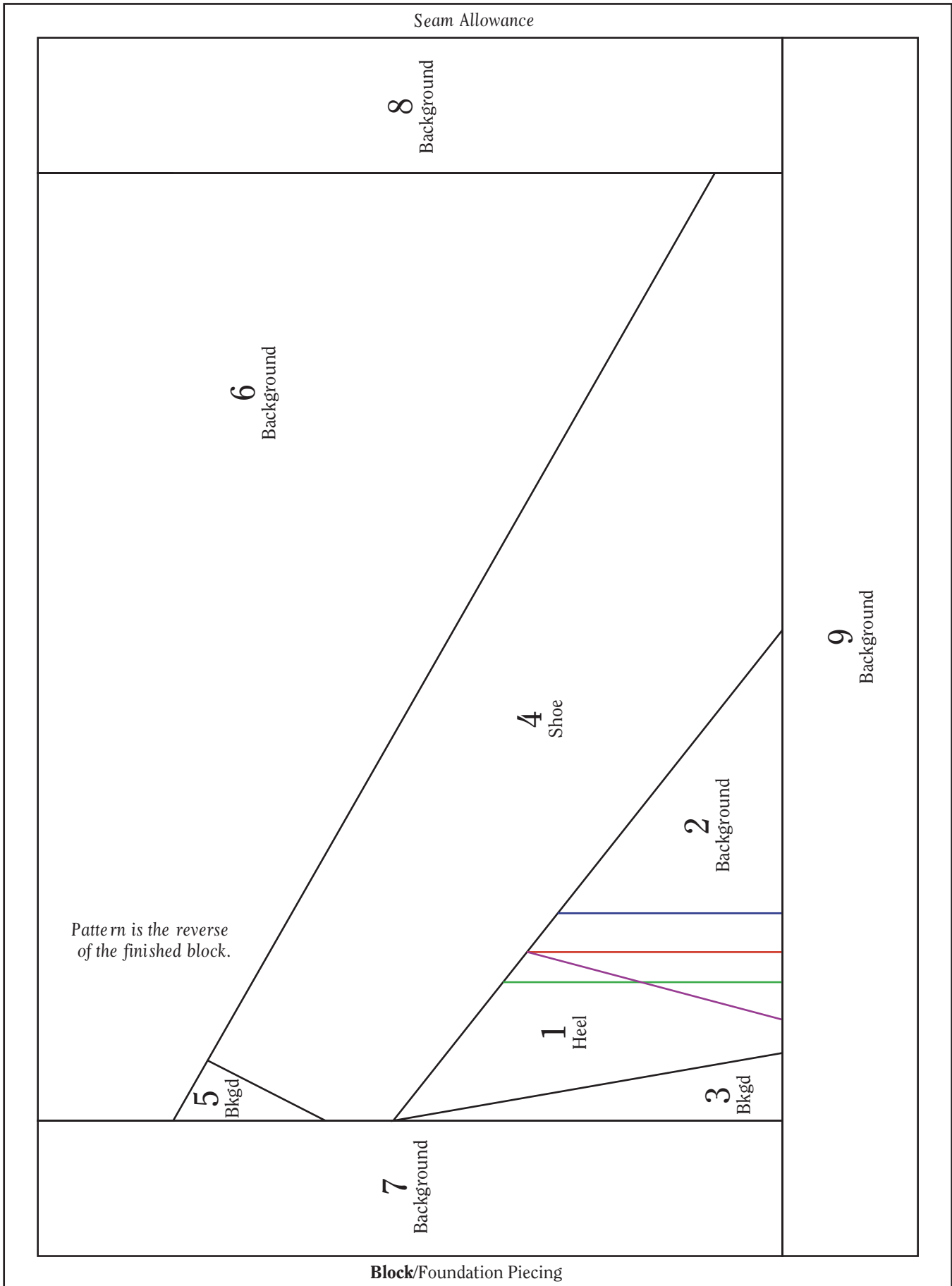
Notice the variety of heel styles indicated by the colored lines on the foundation-piecing pattern on the next page. Choose the one you want and position the fabric for patch 1 to extend at least 1/4" beyond the appropriate line.



See the March/April 2001 (#78) issue of *Quiltmaker* magazine for the complete *Steppin' Out* quilt pattern. If you that issue is not available in your own archives, check [www.VillageQuiltShopper.com](http://www.VillageQuiltShopper.com) for back issue availability.

# Red Hats Steppin' Out Foundation Pattern

A Web Extra from *QUILTMAKER* magazine  
<http://www.quiltmaker.com>



9 1/2", including seam allowances.