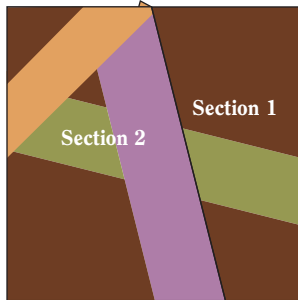
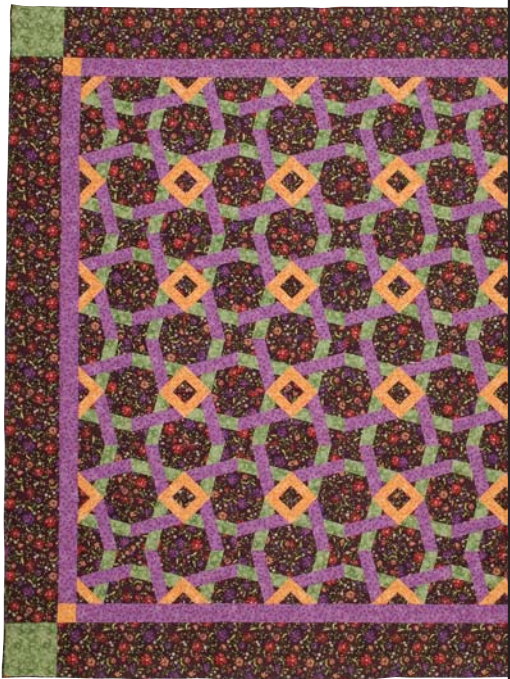


Autumn Twist Foundation Pattern

Use these foundations to make the *Autumn Twist* blocks if you prefer this method. Complete directions for *Autumn Twist* appear in *QUILTMAKER* Sept/Oct '08 (No. 123). If you cannot find this issue at your local quilt shop, order back issues at VillageQuiltShoppe.com.

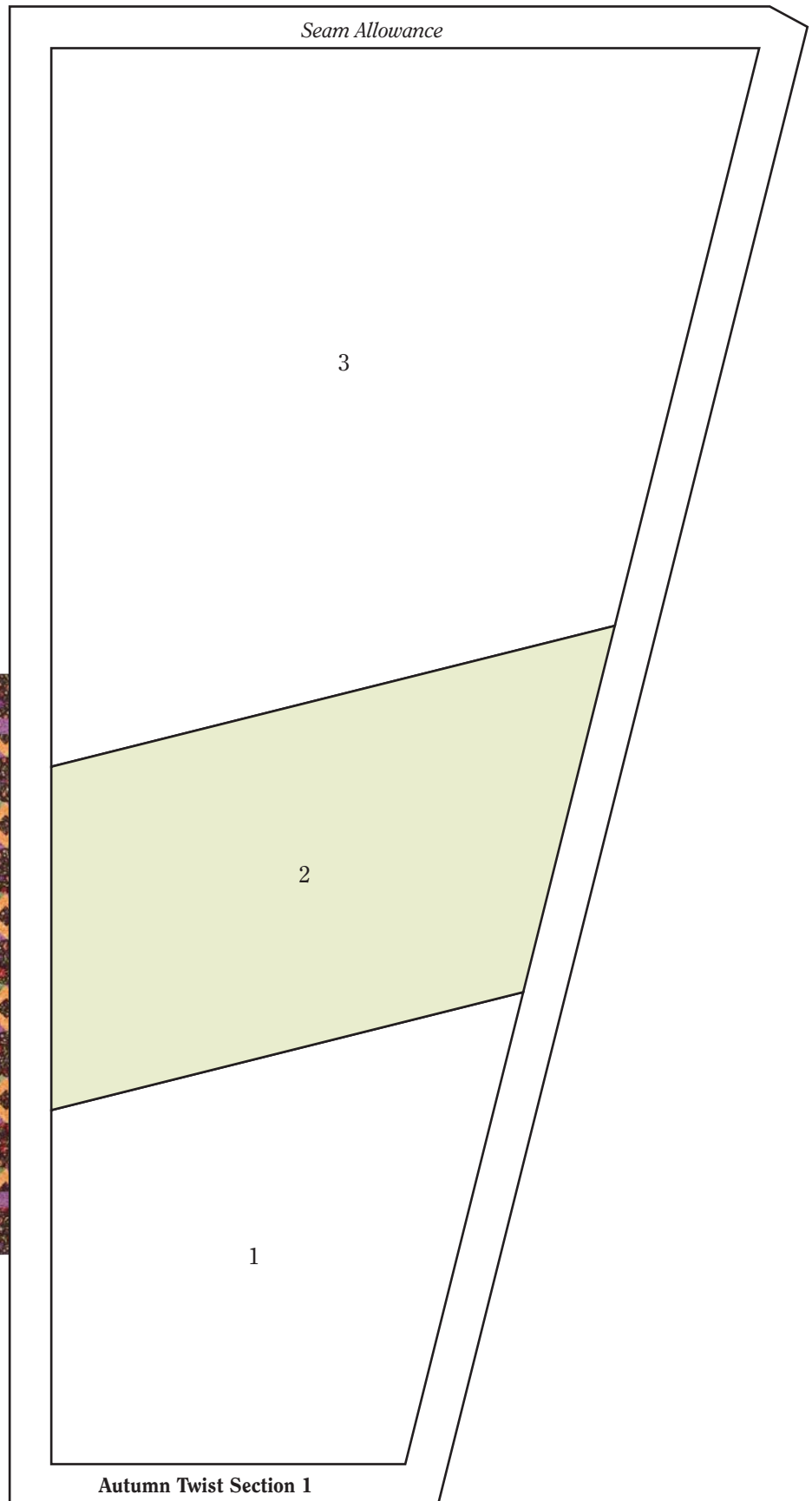


Block Piecing
Make 100



Be sure your printed patterns match the measurements published in *QUILTMAKER*. If your pattern sizes are different, check your print settings to make sure there is no page scaling—you should print the page at 100% or actual size.

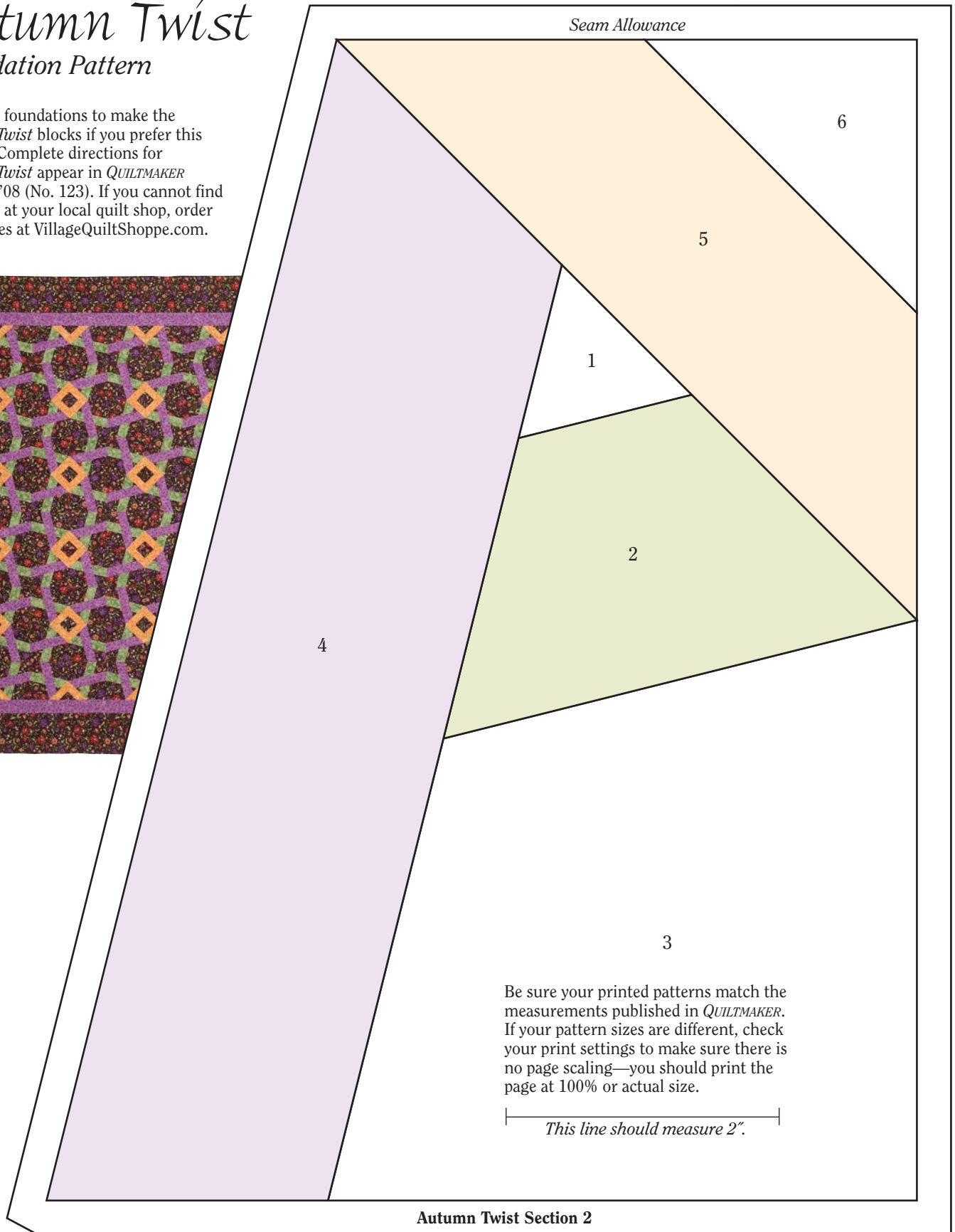
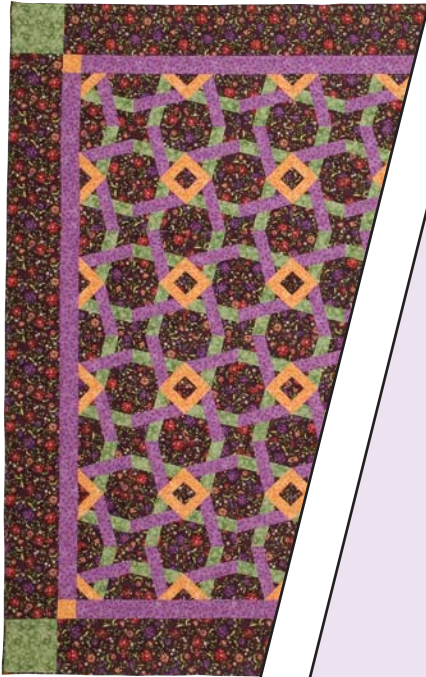
—|—————|
This line should measure 2".



*Pattern is the reverse
of the finished section.*

Autumn Twist Foundation Pattern

Use these foundations to make the *Autumn Twist* blocks if you prefer this method. Complete directions for *Autumn Twist* appear in *QUILTMAKER* Sept/Oct '08 (No. 123). If you cannot find this issue at your local quilt shop, order back issues at VillageQuiltShoppe.com.



Pattern is the reverse of the finished section.