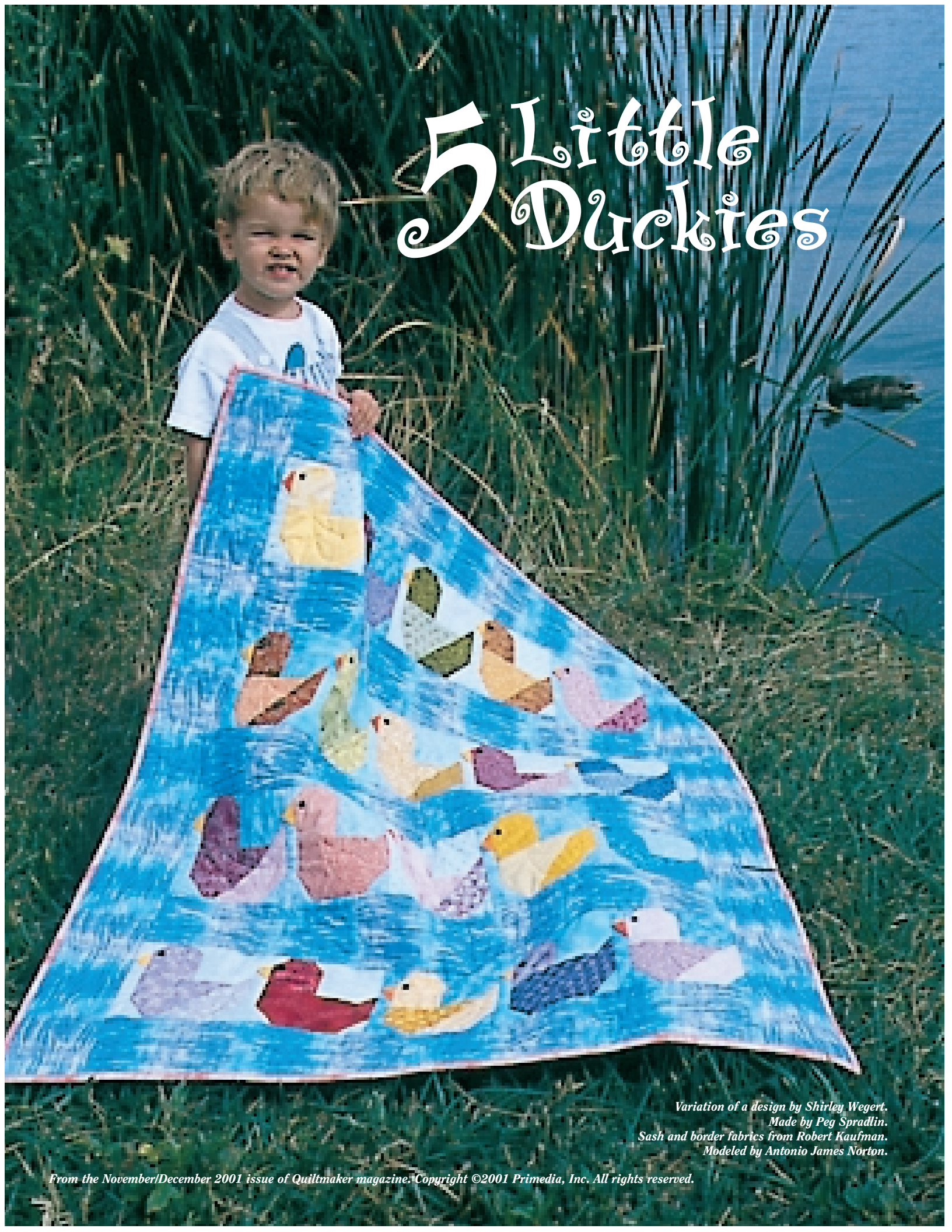


5 Little Duckies



*Variation of a design by Shirley Wegert.
Made by Peg Spradlin.
Sash and border fabrics from Robert Kaufman.
Modeled by Antonio James Norton.*

These charming foundation-pieced ducklings set with simple sashing are quick and easy to make. 5 Little Duckies, designed for QUILTMAKER's 2002 Project Linus quilt, is perfect for charity quilting or an upcoming baby shower.

More detailed directions on the quilting process are given in "Basic Lessons" on the insert.

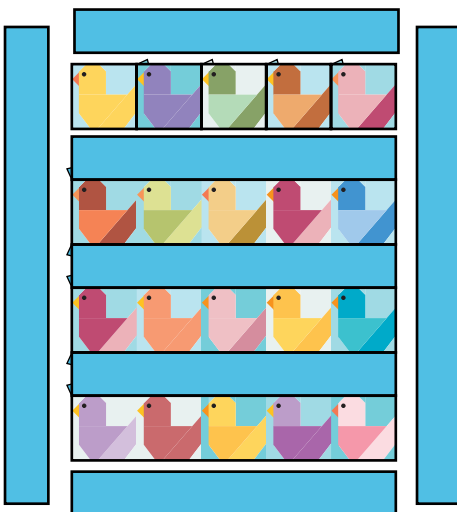
Part 2 of 2

In part 1, *QM* Sept/Oct '01 (No. 81), we presented the foundation-pieced pattern and instructions for making the blocks and joining them in rows. If you would like to order a back issue, call 800-477-6089. For more information about Project Linus or to contact your local chapter, visit www.projectlinus.org or write to Project Linus, P.O. Box 5621, Bloomington, IL 61702-5621.

1 Completing the Top

Matching centers, sew a row and sash together and press the seam allowances toward the sash. Trim excess sash length. Repeat to add the remaining rows and sashes.

We used a directional print for the sashes and border for a watery look. For the squared border, add the top and bottom strips *first* and press the seam allowances toward the strips. Trim the extra length even with the quilt edges. Add the side strips in the



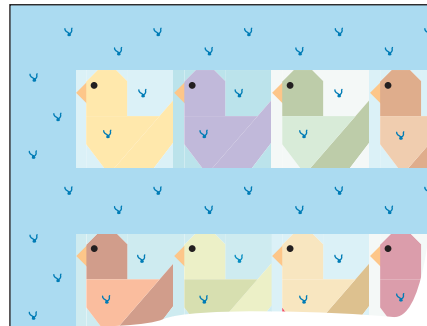
Assembly

same way. If you have not already done so, remove the foundation paper.

2 Quilting

Slightly stretch the lining wrong side up and pin or tape in place. Add the batting and quilt top and baste the layers together.

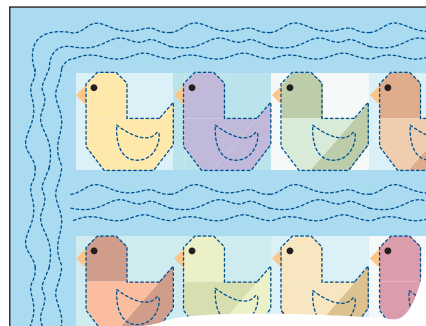
Because this quilt is patterned for quick quilting, we offer a plan for tying as well as a machine-quilting motif that can be done without marking the top. To tie your quilt, see the tip "Securely Fastened."



Tying Placement

Quilt the ducks in the ditch. By eye, quilt a wing in each duck and wavy lines in the sashes and border.

For machine quilting the ducks' wings, use a darning foot. When quilting the waves, switch to a walking foot.



Quilting Placement

3 Finishing Up

Join the binding strips to make a continuous strip. Enclose the edges of the quilt with the binding. To display the wall quilt, add a sleeve to the lining by hand. ■

Easy

QUILT SIZE:

Crib/Wall Quilt
38" x 44"

BLOCK SIZE: 6"

YARDAGE: (44" fabric)

Blue Print.....	1 1/2 yards ♦
border strips★ sides	2 at 4 1/2" x 46 1/2"
top/bottom	2 at 4 1/2" x 32 1/2"
sashes★	3 at 4 1/2" x 32 1/2"
Pink Print.....	3/8 yard
double-fold binding	5 at 2 1/4" x 38"
Lining.....	1 1/2 yards
panel	1 at 42" x 48"
Sleeve (optional).....	1/3 yard
strip	1 at 9" x 38"
Batting.....	42" x 48"

OPTIONAL SUPPLIES: yarn, pearl cotton or embroidery floss.

- ♦ Binding strips can be cut from remaining yardage. Extra seaming will be required.
- ★ An extra 2" has been added to the length for insurance. Cut the sashes and border strips parallel to the selvages.

Securely Fastened

Tying quilts by hand is an easy and fast alternative to quilting and the knots add dimension and design. You can use yarn, pearl cotton or embroidery floss. Follow these steps for secure ties.

Start with an overhand knot, but do not tighten. Wrap the yarn in your right hand around the overhand knot a second time. Then wrap the yarn in your left hand around the overhand knot. Pull both ends to tighten. Cut the tails to your desired length. Place your ties 3"-4" apart across the quilt top.

